

LOCKMATIC

VEHICLE FIXATION SYSTEM



INDEX

ABOUT US	02
OUR PRODUCTS	02
EXPLANATION	03
COMPONENTS	04
TECHNICAL SPECIFICATIONS	05
DIMENSIONS	06
REQUIRED VEHICLE DIMENSIONS	07

▶ ABOUT US

Since 2017, **Saurus Loading Systems** has specialized in the design, manufacture and sale of Loading Equipment with competitive prices and reasonable payment terms. Combining the ability of sectoral experience and R & D, our company, **Saurus Loading Systems** has been established to produce practical and high-quality products which require little maintenance.

Saurus Loading Systems is an innovative and growing fast company based in Turkey which is specialized in designing and producing industrial loading systems with competitive prices and reasonable payment terms.

Saurus Loading Systems exports its products to approximately 65 countries around the World. We market our products with Certificates (CE). The entire loading industry is developed and produced at our manufacturing plant in Ankara.

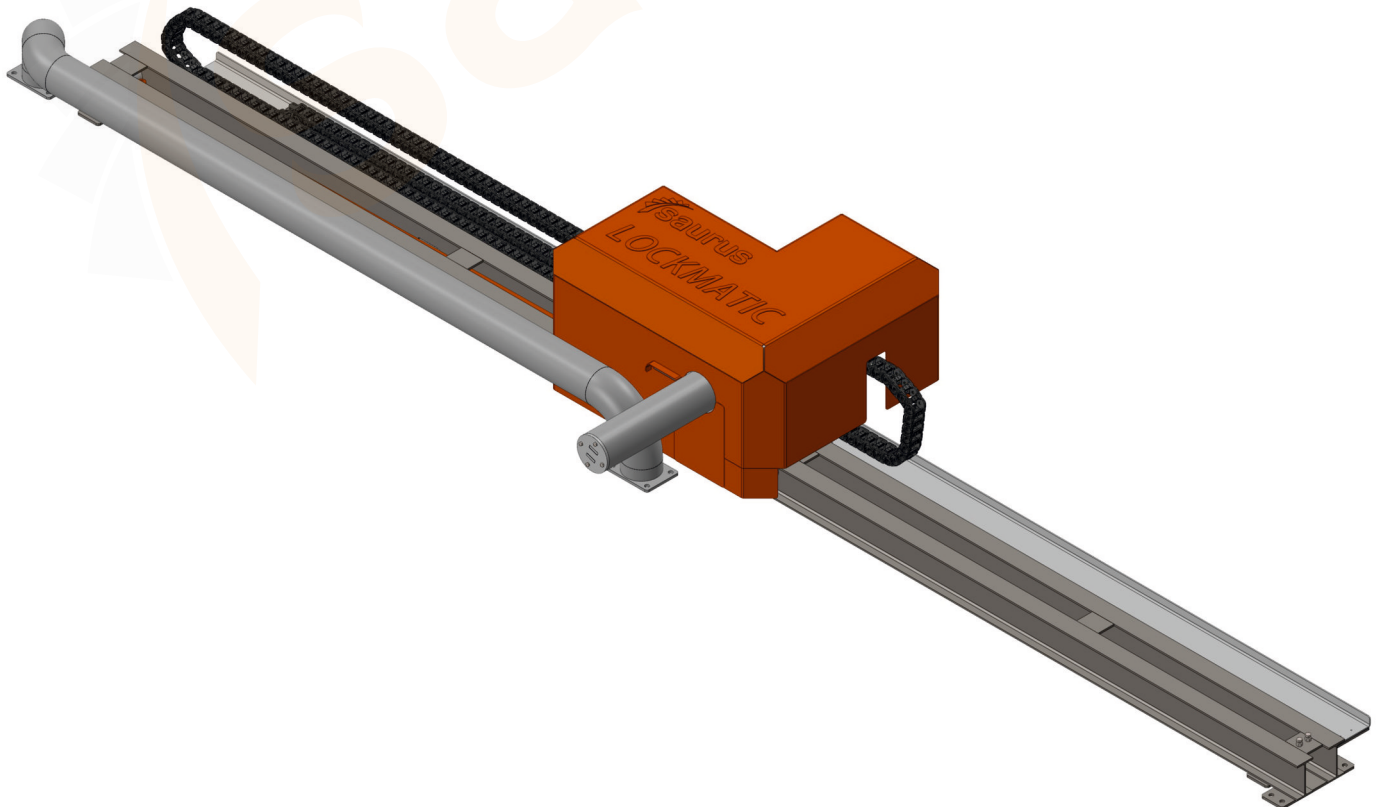
▶ OUR PRODUCTS

Our wide range of products, such as mobile ramps, container ramps, embedded ramps, edge ramps, hinged ramps, telescopic ramps, vertical yard levellers, scissor platforms, and loading platforms, suits every need.

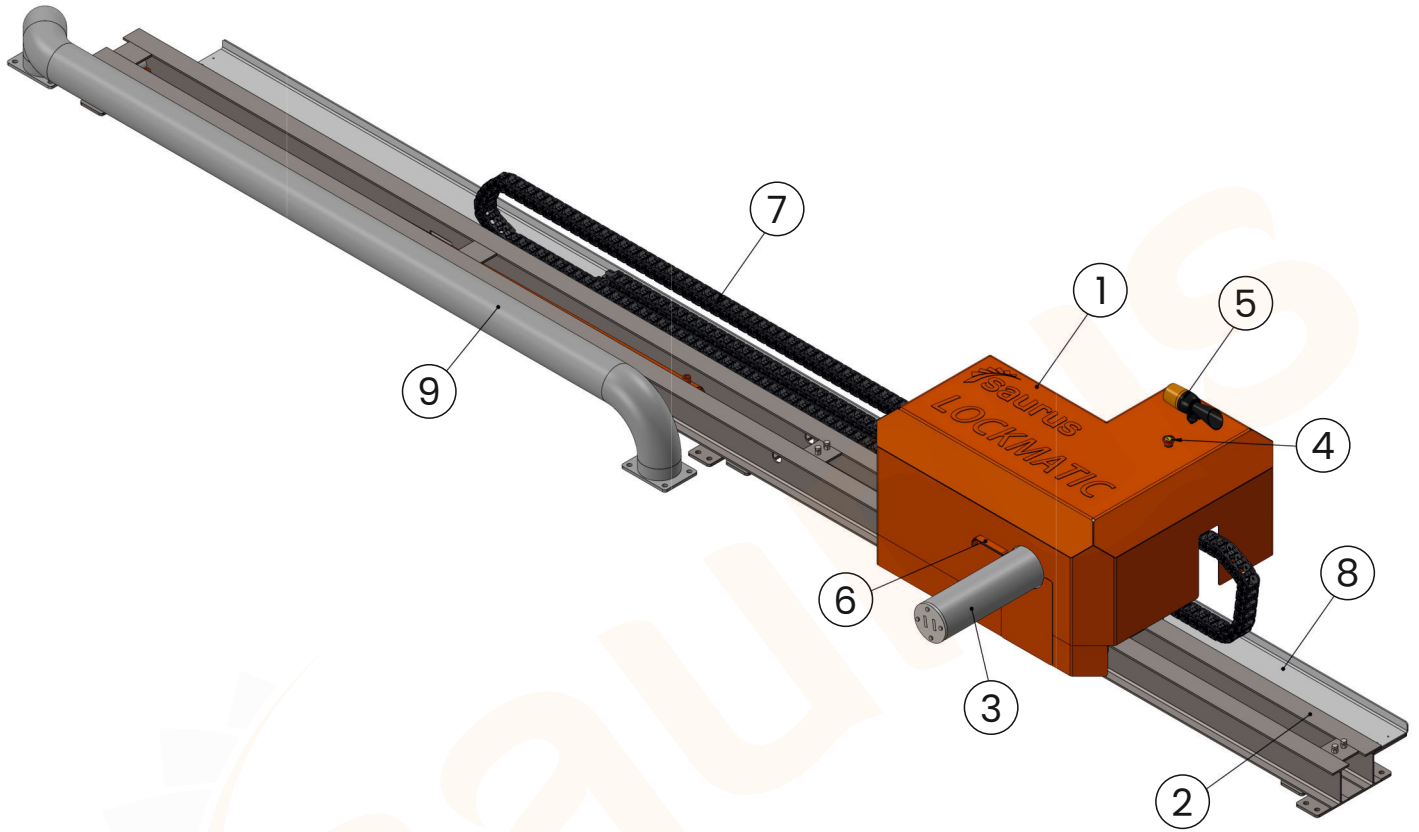
EXPLANATION

SAURUS LOADING SYSTEM LOCKMATIC is an automatic vehicle restraint system. A hydraulic wheel safety system helps prevent accidents and injuries when loading vehicles with a ramp. During the loading process, there is a risk that the vehicle may unintentionally slide off the ramp due to the impact of the forklift, a problem known as vehicle drift. Another ever-present danger is leaving the car too early due to misunderstanding, incorrect instructions or lack of communication with the driver. For both risks, SAURUS LOADING SYSTEM LOCKMATIC automatic vehicle restraint system is the ideal solution.

While the vehicle approaches the ramp, the SAURUS LOADING SYSTEM LOCKMATIC automatic vehicle restraint system acts as a parking guide for the vehicle approaching the ramp in reverse. This reduces the possibility of damage to the vehicle, the dock, the dock leveler, or the building. Once the vehicle is in the correct position in front of the ramp, the hydraulic wheel stabilization system starts working via a button on the control box located inside the building. The rearmost wheel of the vehicle is automatically detected and fixed by the laser sensor. The outstanding feature of the SAURUS LOADING SYSTEM LOCKMATIC automatic fastening system is the constant force coming from the hydraulic system, which ensures a reliable and safe fastening function during loading operations.



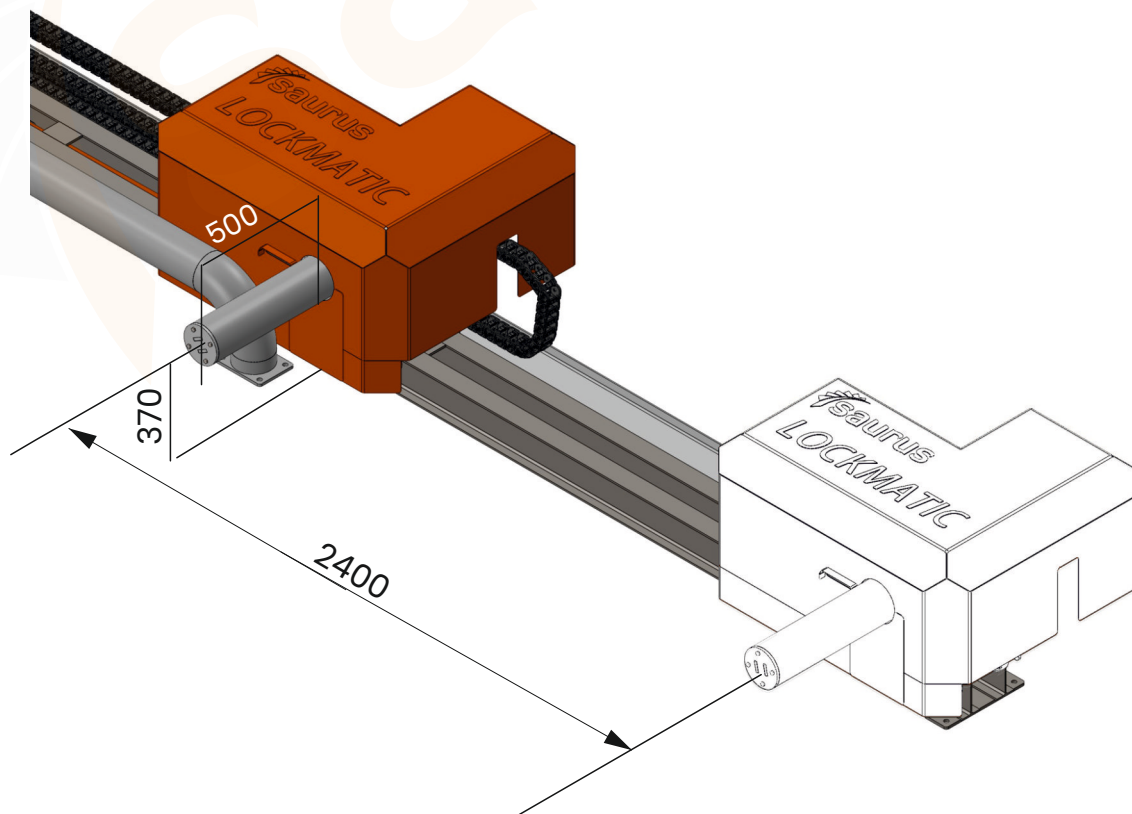
COMPONENTS



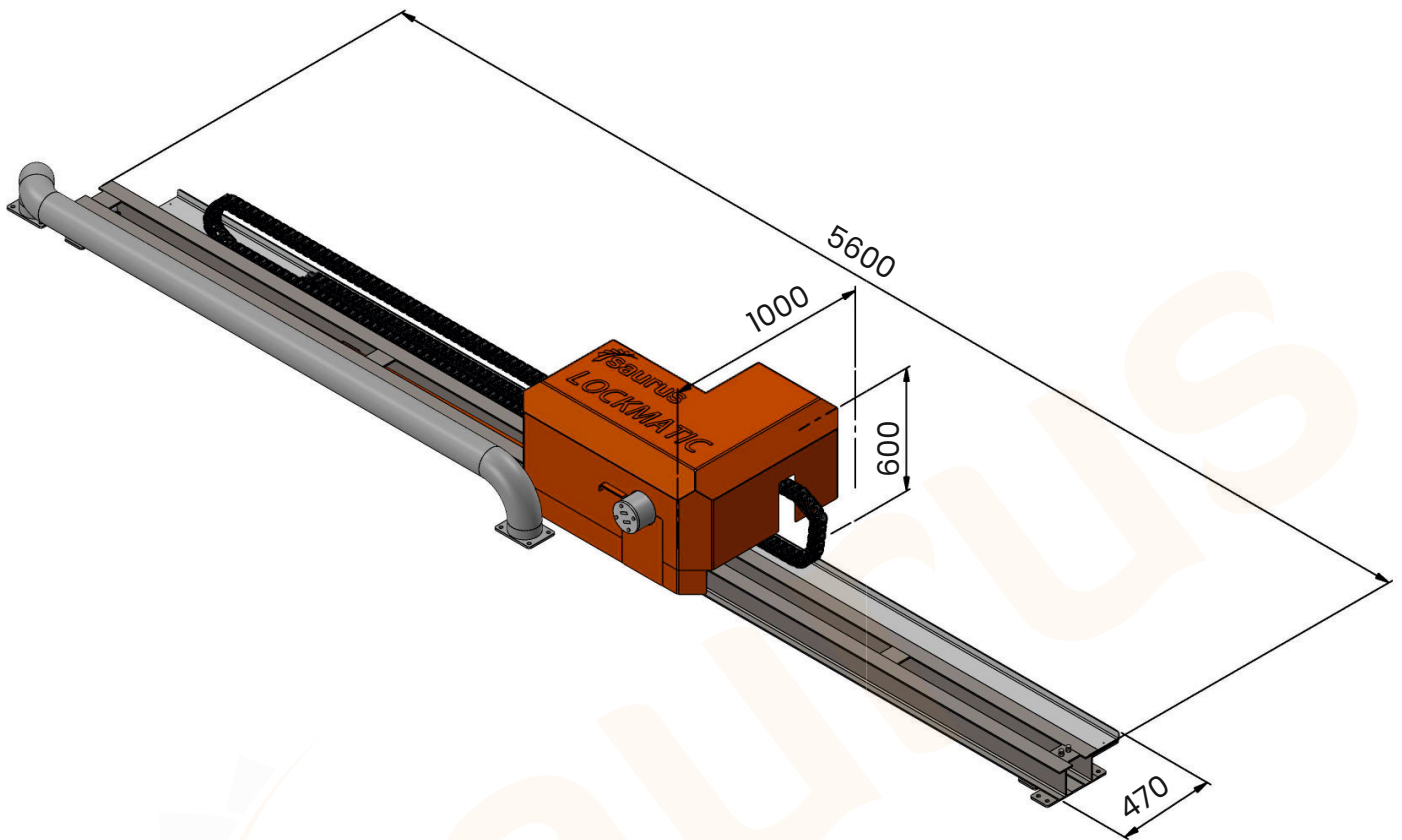
PART NO	DESCRIPTION
1	Vehicle
2	Guide Hyperlink
3	Fixing Arm
4	Emergency Stop
5	Audio and Visual Warning
6	Laser Scanner Sensor
7	Energy chain cable tray
8	Cable channel
9	Vehicle wheel guide

TECHNICAL SPECIFICATIONS

Vehicle Stabilization Force	200 kN
fixing arm strak	400 mm
Vehicle Wheel Fixing Height	370 mm
Operating Speed	0.06 m/sn
Working Strak	2400 mm
Standard Cable Length	10 m
Dimensions	1000x600x5600
Weight	750 kg
Power	380V AC 3 kw Electric Motor
Control	24 VDC
Arm Position Sensor	Two inductive sensors
Vehicle Position Sensor	Two inductive sensors
Operation Alert	Audible and visual alarm
Emergency Stop	Available
Vehicle Wheel Guide	both wheel guides are standard
Traffic lamp	Dual (red and green) traffic lights are standard
Resistance to	All Steel Parts are Hot Dip Galvanized



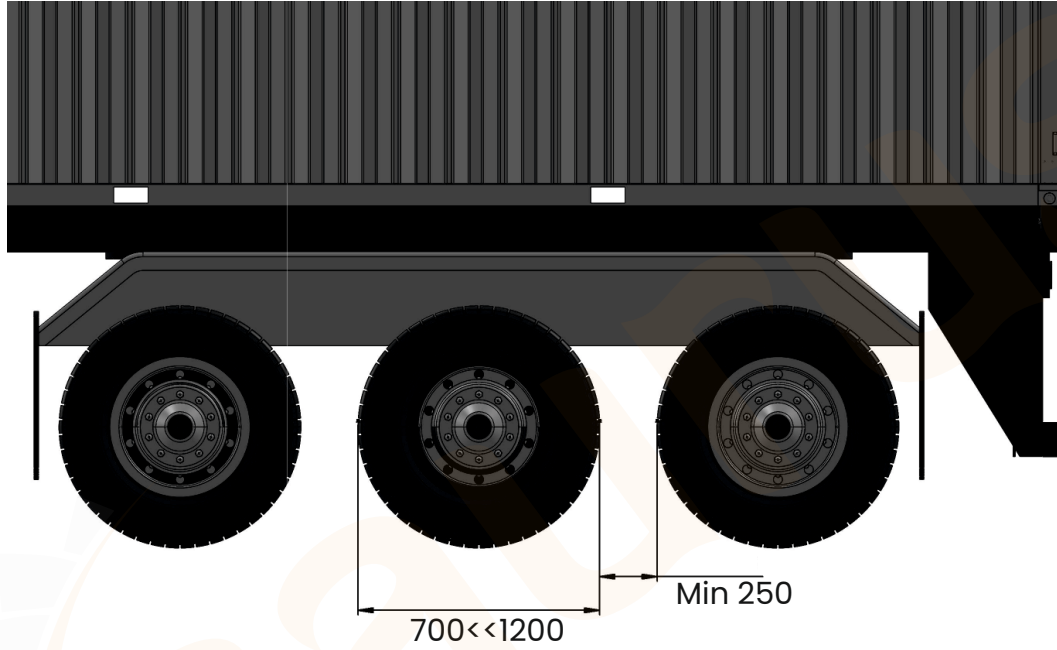
DIMENSIONS



NOTE: SAURUS LOADING SYSTEM LOCKMATIC is shipped in a crate. Package dimensions are below.

PACKAGE SIZE	
WIDTH	1200 mm
SIZE	700 mm
HEIGHT	5800 mm
WEIGHT	800 kg

REQUIRED VEHICLE DIMENSIONS



1. Vehicle wheel diameter must be between 700 mm and 1200 mm.
2. The distance between the wheels to be locked must be at least 250 mm.

